

名古屋市都市計画図

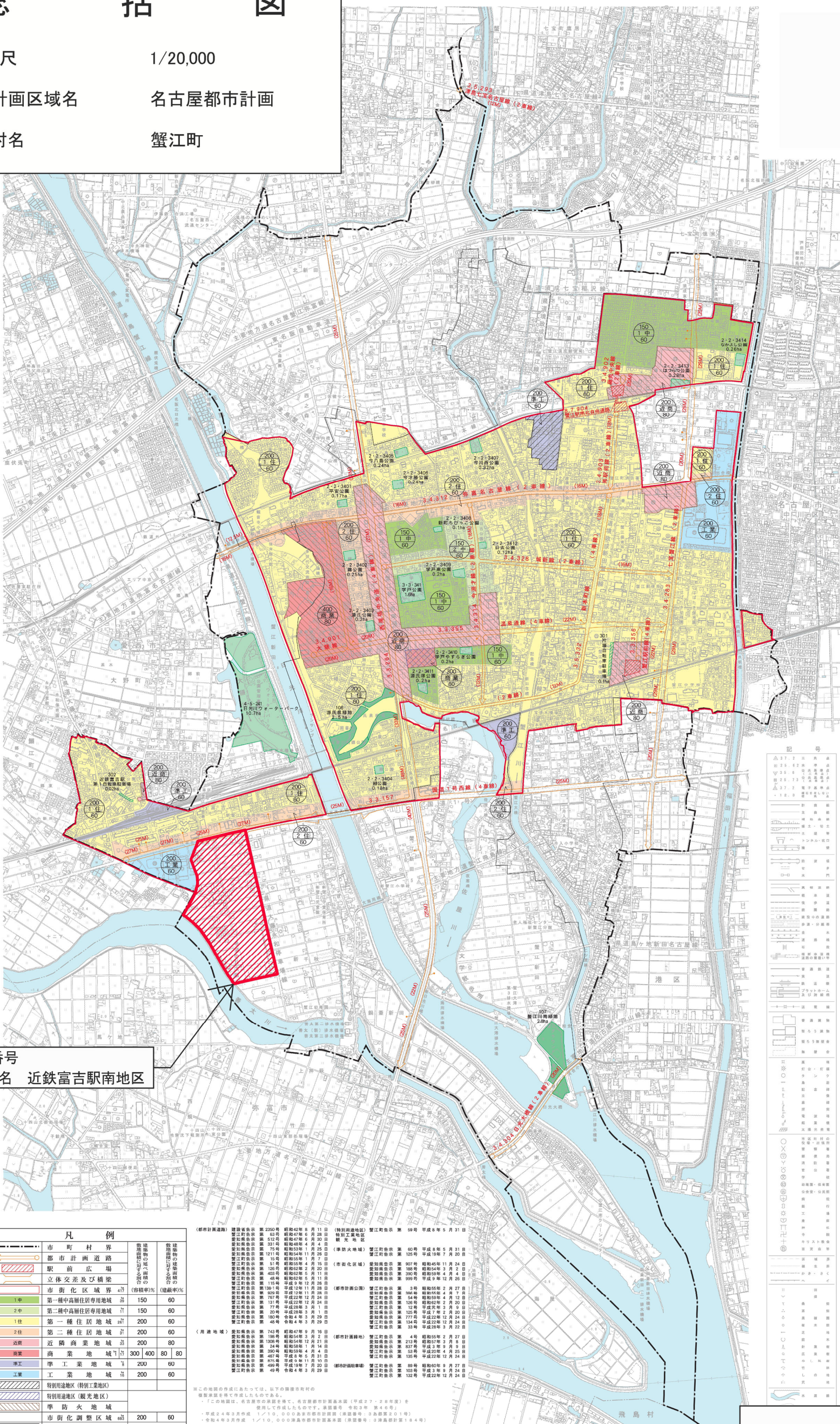


総括図

縮尺 1/20,000

都市計画区域名 名古屋都市計画

市町村名 蟹江町



地区番号 地区名 近鉄富吉駅南地区

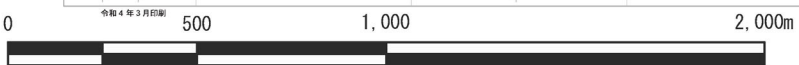
Legend table for symbols and codes used on the map, including various types of roads and boundaries.

Table titled '凡例' (Legend) detailing various urban planning zones and their corresponding colors and patterns, such as residential, commercial, and industrial zones.

Table titled '都市計画道路' (Urban Planning Roads) listing specific road names, their types, and the dates of their planning decisions.

Additional explanatory text regarding the map's scale, projection, and specific planning details for the highlighted area.

Section titled '凡例' (Legend) with a red hatched box symbol and the text '市街化調整区域から市街化区域へ編入する区域' (Area to be incorporated from urbanization adjustment zone to urbanization zone).



Small text at the bottom right corner providing additional information or notes related to the map's data and planning process.